

INGROUND 2-PISTON LIFT

TOP LIFT 2.35 TLAD

SURFACE MOUNTED

Sliding plate Precision 1200 mm
(optional accessory)

Drive on stop
(optional accessory)

Wheel free system
flush with platform

Length and crosswise
adjustable aluminum
slider plates

Drive on ramp 1250 mm
(optional accessory)

TECHNICAL DATA

capacity	3500 kg
wheel free lift	3500 kg
effect. raise height platform	2008 mm
effect. raise height wheel free unit	1982 mm
platform length	4400 mm
platform height	180 mm
drive over height wheel free unit	60 mm
piston diameter	123 mm
piston distance	1500 mm
installation depth	2443 mm
motor output	3,0 kW
power connector	400 V/16 A
cable length to control	11 m
lifting time	≈ 35 sec.
lowering time	≈ 35 sec.

Platform 2.35 TLAD
with platform notches for wheel free system flush with platform, turn tables and sliding plates 0016910

Platform 2.35 TLAD
with platform notches for wheel free system flush with platform 0016909

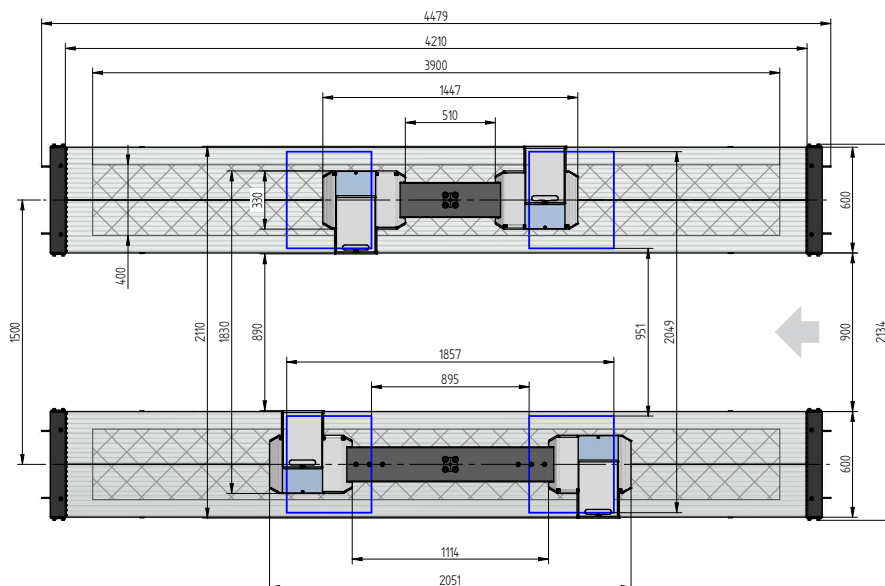
Platform 2.35 TLAD 0017053

Platform wheelfree 2.35 TLAD 0016907

Installation cassette 1500 mm TLAD 0016905

Lifting unit 3,5 t TLAD 1500 mm - K
pre-assembled in installation cassette 0017054

Lifting unit 3,5 t TLAD 1500 mm - K
for wheel free system, pre-assembled in installation cassette 0016908

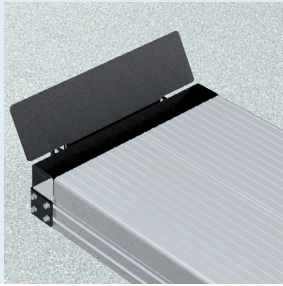




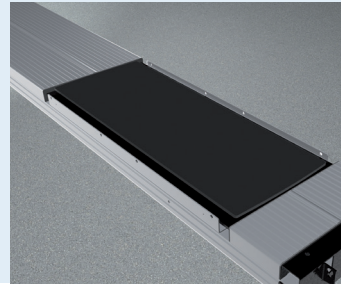
ACCESSORIES



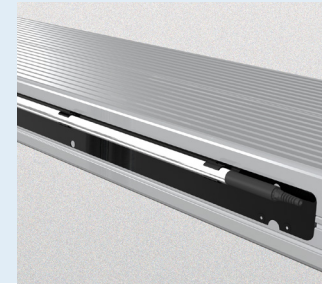
Drive on ramp
 1250 mm
 0016764



Drive on stop
 0016765



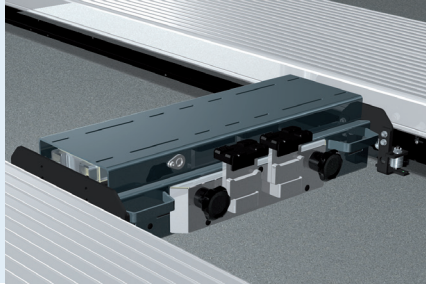
Sliding plate
 Precision 1200 mm
 0016898



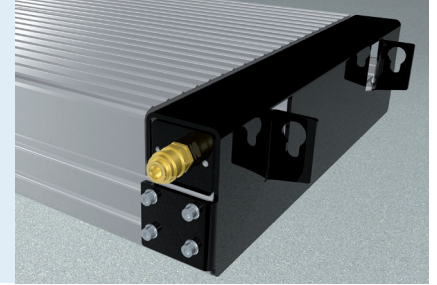
Lighting
 LED
 0016903



Slide rail
 4400 mm
 0016899



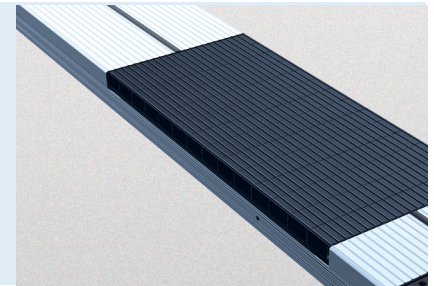
Axle Jack 2600 kg
 pneumatic, without slide rails
 0016767



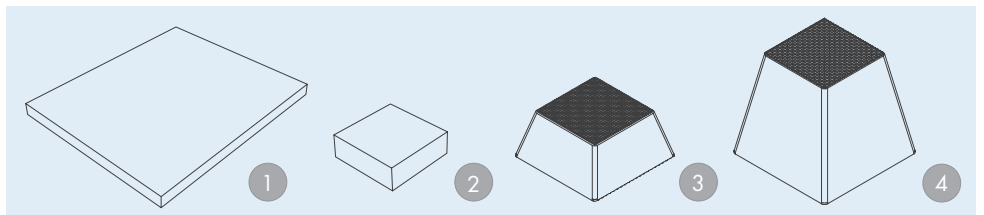
Compressed air supply
 0016769



Wheel alignment supports
 telescopic
 0016771



Rubber elements
 50 mm 100 mm 200 mm
 0017298 0017299 0017300



Rubber pads
 1 | 290 x 335 x 20 mm 0016740
 2 | 120 x 120 x 40 mm 0016739

Rubber pads Pyramid
 3 | 70 mm 0015742
 4 | 140 mm 0016738

Techn. changes and errors excepted.
 Valid from 01 2022 © Nussbaum Automotive Lifts
 GmbH | Korker Str. 24 | 77694 Kehl | Germany
 Tel.: +49 (0) 7853 899 - 0 | Fax: +49 (0) 7853
 8787 | info@nussbaumlifts.com | nussbaumlifts.com