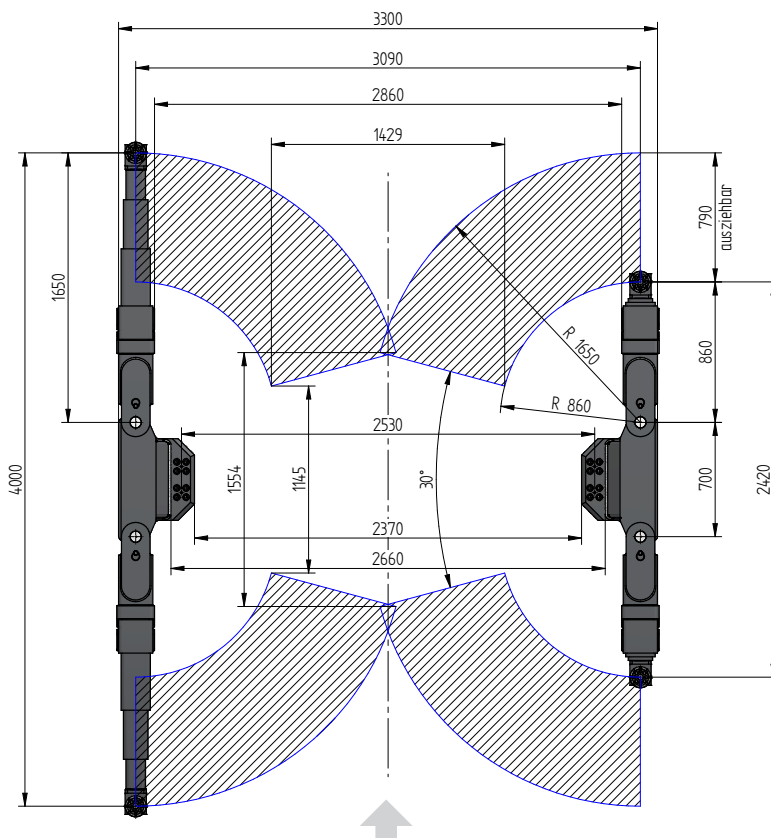
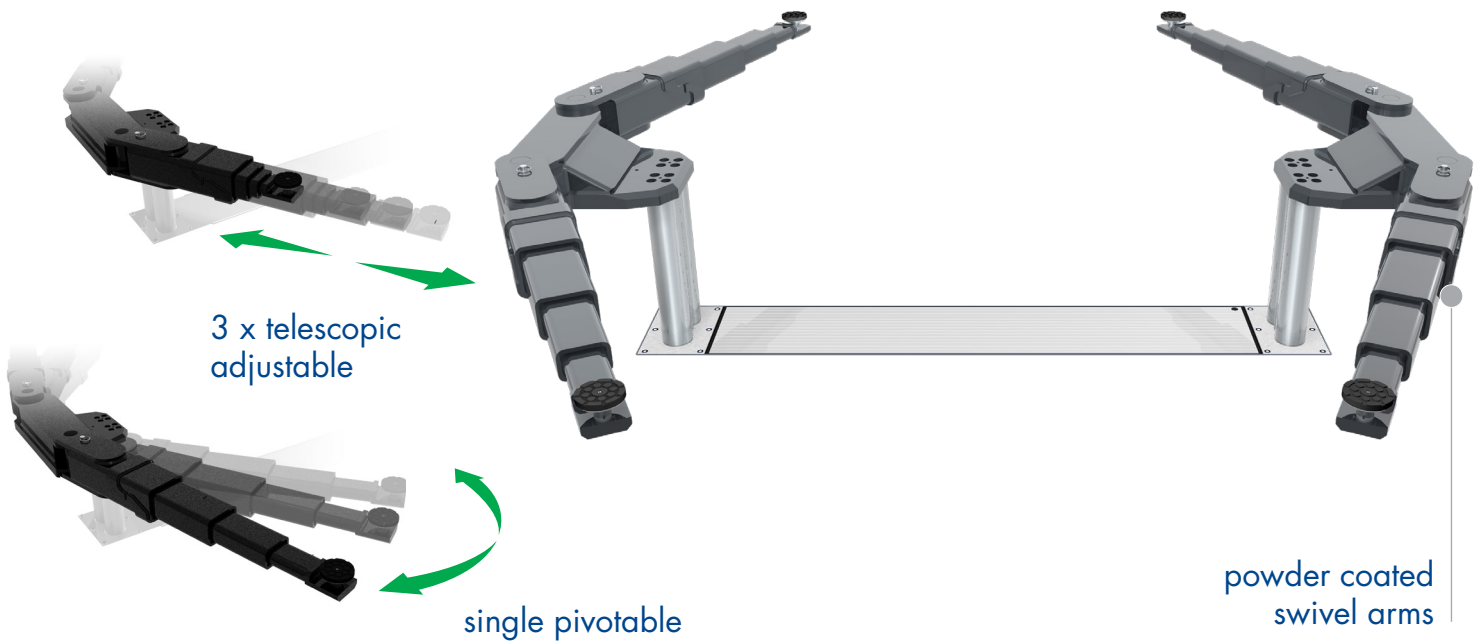


INGROUND 2-PISTON LIFT

TOP LIFT 2.65 TLK

SURFACE MOUNTED



TECHNICAL DATA

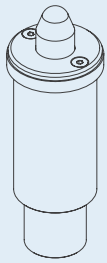
Capacity	6500 kg
Effective raise height	2074 mm
Move in height	150 mm
Piston diameter	123 mm
Piston distance	2530 mm
Installation depth	2408 mm
Motor output	3,0 kW
Power connector	400 V/16 A
Cable length to control	11 m
Lifting time	≈ 35 sec.
Lowering time	≈ 35 sec.

Arms 2.65 TLK	0016804
Installation cassette 2530 mm	0016268

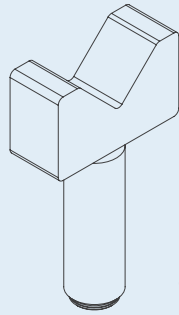
Lifting unit 6,5 t 2530 mm - K pre-assembled in installation cassette	0016802
--	---------



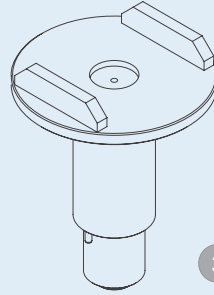
ACCESSORIES



1



2



3



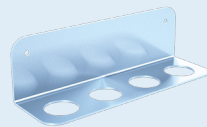
4

1 | **Stacking adapter NCV3**
d 45 x d 70 / 125-250 mm
0016743 (1set / 2 pcs.)

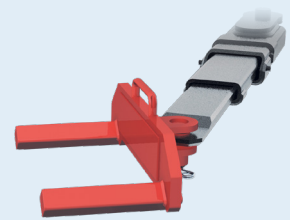
2 | **Stacking adapter V-prism**
d 45 / 182-312 mm
0016744 (1set / 2 pcs.)

3 | **Stacking adapter U-form**
d 130 x d 45 / 193-295 mm
0016745 (1set / 4 pcs.)

4 | **Stacking adapter extension**
130 mm
0016742 (1set/ 4 pcs.)



**Bracket for stacking-
adapter extension**
0016751



Wheelfork adapter
0016753 (1Set / 4 Pieces)