

## INGROUND 2-PISTON LIFT

# TOP LIFT 2.35 TLAD

## SURFACE MOUNTED

Sliding plate Precision 1200 mm  
(optional accessory)

Drive on stop  
(optional accessory)

Wheel free system  
flush with platform

Length and crosswise  
adjustable aluminum  
slider plates

Drive on ramp 1250 mm  
(optional accessory)

### TECHNICAL DATA

capacity	3500 kg
wheel free lift	3500 kg
effect. raise height platform	2008 mm
effect. raise height wheel free unit	1982 mm
platform length	4400 mm
platform height	180 mm
drive over height wheel free unit	60 mm
piston diameter	123 mm
piston distance	1500 mm
installation depth	2443 mm
motor output	3,0 kW
power connector	400 V/16 A
cable length to control	11 m
lifting time	≈ 35 sec.
lowering time	≈ 35 sec.

Platform 2.35 TLAD  
with platform notches for wheel free system flush with platform, turn tables and sliding plates 0016910

Platform 2.35 TLAD  
with platform notches for wheel free system flush with platform 0016909

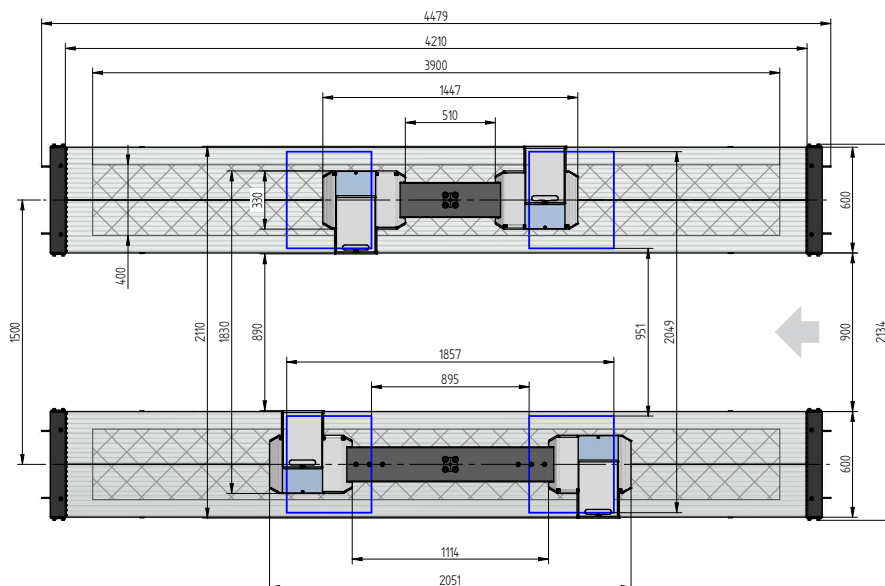
Platform 2.35 TLAD 0017053

Platform wheelfree 2.35 TLAD 0016907

Installation cassette 1500 mm TLAD 0016905

Lifting unit 3,5 t TLAD 1500 mm - K  
pre-assembled in installation cassette 0017054

Lifting unit 3,5 t TLAD 1500 mm - K  
for wheel free system, pre-assembled in installation cassette 0016908

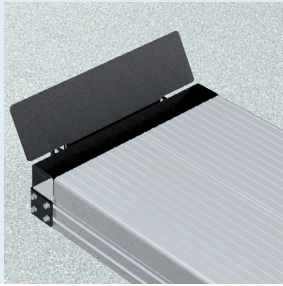




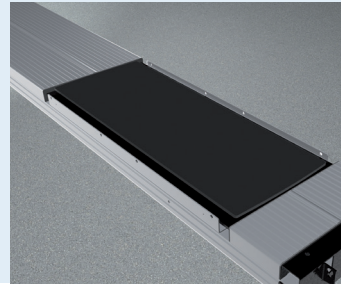
## ACCESSORIES



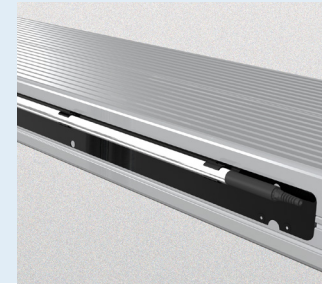
**Drive on ramp**  
 1250 mm  
 0016764



**Drive on stop**  
 0016765



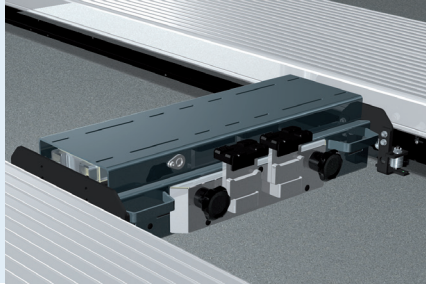
**Sliding plate**  
 Precision 1200 mm  
 0016898



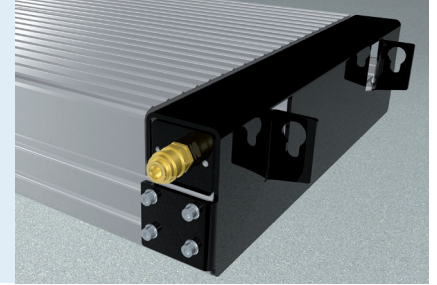
**Lighting**  
 LED  
 0016903



**Slide rail**  
 4400 mm  
 0016899



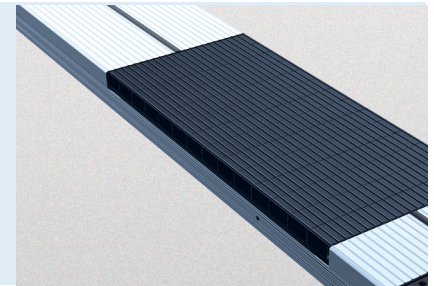
**Axle Jack 2600 kg**  
 pneumatic, without slide rails  
 0016767



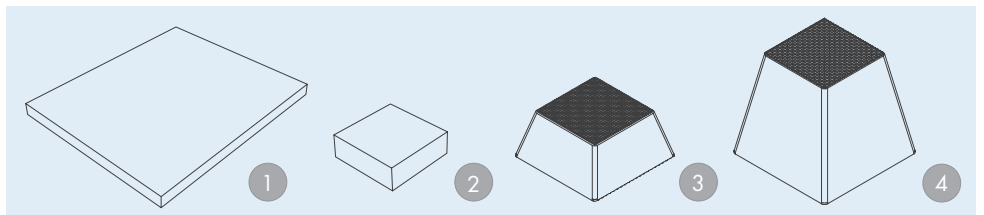
**Compressed air supply**  
 0016769



**Wheel alignment supports**  
 telescopic  
 0016771



**Rubber elements**  
 50 mm 100 mm 200 mm  
 0017298 0017299 0017300



**Rubber pads**  
 1 | 290 x 335 x 20 mm 0016740  
 2 | 120 x 120 x 40 mm 0016739

**Rubber pads Pyramid**  
 3 | 70 mm 0015742  
 4 | 140 mm 0016738

Techn. changes and errors excepted.  
 Valid from 01 2022 ©  
 Nussbaum Custom Lifts GmbH | Hertzstr.6  
 77694 Kehl | Germany  
 Tel.: +49 (0) 7853 899 - 0 | Fax: +49 (0) 7853 8787  
 info@nussbaum-group.de | nussbaumlifts.com